

# Regular Slotted Case (RSC) Erector

With Hot Melt bonding  
With adhesive tape

**F110**  
**F310**



**SPEED: 300 - 600 BOXES PER HOUR**

Dimensions of cases // millimeters

|      | WIDTH |     | LENGTH |     | HEIGHT |     | KNOCKED-DOWN RSC | SPEED      |
|------|-------|-----|--------|-----|--------|-----|------------------|------------|
|      | min   | max | min    | max | min    | max | max              |            |
| F110 | 180   | 400 | 300    | 600 | 150    | 400 | 480 x 1050       | 300 à 600  |
| F310 | 180   | 400 | 300    | 600 | 150    | 400 | 480 x 1050       | 300 à 1200 |

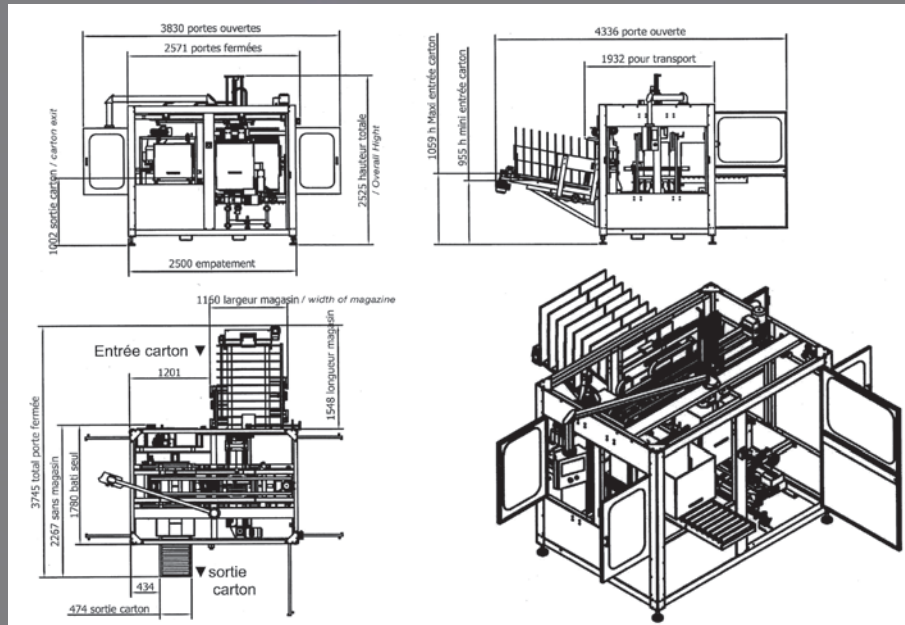


**MECA**  
**SYSTEME USA**  
**MILWAUKEE**  
INNOVATIVE PACKAGING MACHINERY

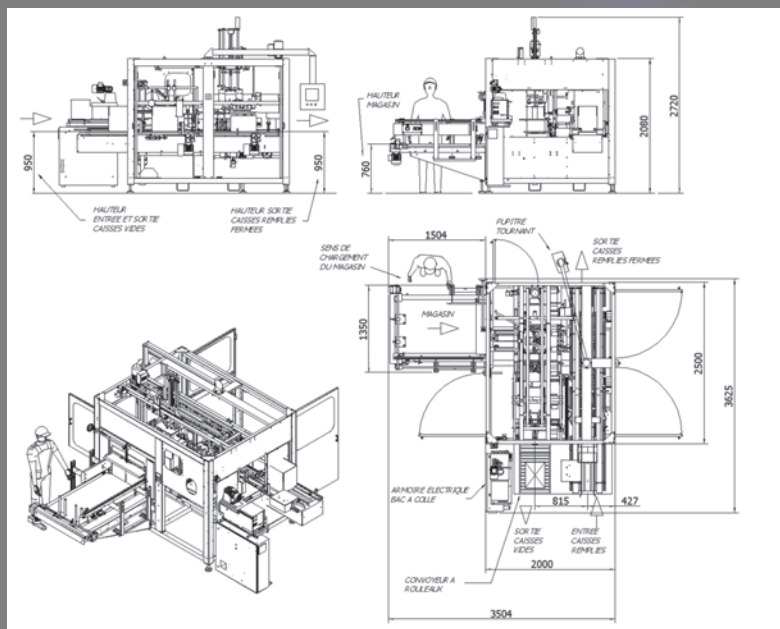
# Specifications

- ▶ Output: 300 - 1200 cases / hour
- ▶ Power: 8 HP
- ▶ Easy to use PLC
- ▶ Air consumption: 12 cfm @ 100 psi

## F110 : Dimensions



## F310 : Dimensions



See this machine in action!

- 101 Washington Avenue • PMB 232 • Grand Haven, MI 49417 •
- Phone : +1-616-843-5566 • info@meca-systeme.com •
- www.meca-systeme.com •

**Meca**  
SYSTEME USA  
INNOVATIVE PACKAGING MACHINERY

Since 1980